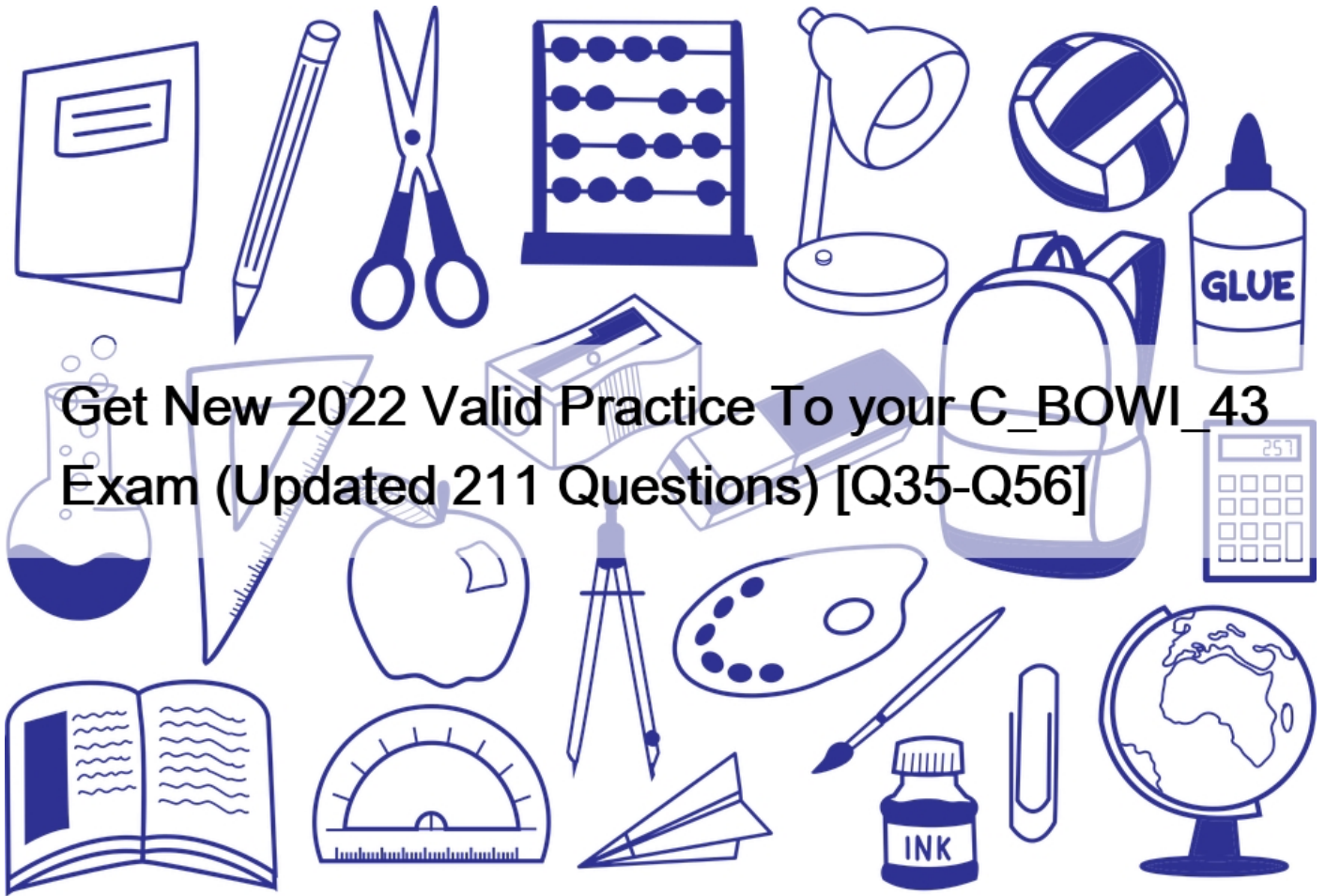


Get New 2022 Valid Practice To your C_BOWI_43 Exam (Updated 211 Questions) [Q35-Q56]



Get New 2022 Valid Practice To your C_BOWI_43 Exam (Updated 211 Questions) [Q35-Q56]

Get New 2022 Valid Practice To your C_BOWI_43 Exam (Updated 211 Questions)

SAP Certified Application Associate C_BOWI_43 Exam Practice Test Questions Dumps Bundle!

SAP BO WEBI Certification Exam Details:

Exam Name SAP Certified Application Associate - SAP BusinessObjects Web Intelligence 4.3

SAP Certified Application Associate - SAP BusinessObjects Web Intelligence 4.2 Schedule Exam SAP Training Sample Questions SAP BO WEBI Certification Sample Questions Exam Price \$550 (USD) Level Associate Reference Books BOW310 (SAP BO WEB INTELLIGENCE 4.3), BOW320 (BO BI 4.3) Passing Score C_BOWI_43 - 69%

C_BOWI_42 - 63% Exam Code C_BOWI_43

SAP C_BOWI_43 Exam Description:

The "SAP Certified Application Associate - SAP BusinessObjects Web Intelligence 4.3" certification exam verifies that the

candidate possesses proven skills and fundamental knowledge of SAP BusinessObjects Web Intelligence 4.3 to create and maintain queries and reports that will help organizations analyze and interpret important information. This exam will measure the candidate's knowledge of SAP BusinessObjects Web Intelligence 4.3, from the creation of queries and design of reports to the analysis of data and document sharing. This verifies that the candidate is able to implement this knowledge practically in projects under guidance of an experienced consultant.

NEW QUESTION 35

A variable in your report contains the statement:

=If[State] = “California” Then [Sales revenue] * 1.05 Else If[State] = “Colorado” Then [Sales revenue] *

1.1 Else If[State] InList (“DC”;”Texas “) Then [Sales revenue] * 1.15 Else If[State] = “Massachusetts” Then

[Sales revenue] * 1.18 Else [Sales revenue]

Sales revenue for Florida is \$1,879,159. Which rate is applied to the Florida revenue by the formula?

Please choose the correct answer.

Response:

- * 1.00
- * 1.05
- * 1.10
- * 1.15
- * 1.18

NEW QUESTION 36

What is the input context of a calculation?

- * The measure being calculated
- * The dimensions used to define the calculation
- * The prompt values used in the query
- * The aggregate function of the calculation

NEW QUESTION 37

A table contains a dimension [CITY] and a measure [SALES]. You insert a column to display the formula AVERAGE([SALES]).

Which operator do you add to the formula so that it displays the average for the table in every row? Note: There are 2 correct

Answers to this question.

- * In Block
- * In Body
- * ForAll ([CITY])
- * ForEach ([CITY])

NEW QUESTION 38

You have a regional sales report with State, City and Sales Revenue dimensions. You want to create a variable that excludes State from the output context. Which output statement should you use?

Please choose the correct answer.

Response:

- * In([State])
- * Out([State])
- * ForAll([State])
- * ForEach([State])

NEW QUESTION 39

Mention the five types of column charts for presenting DATA?

There are 3 correct answers to this question

Response:

- * 4D column chart
- * Column chart with dual values
- * Combined column and line chart
- * Stacked column chart
- * Column charts with fixed contents

NEW QUESTION 40

List the different ways you can use to display professional reports by using Web Intelligence document features?

There are 3 correct answers to this question

Response:

- * As a double-block report containing large amounts of data
- * As a folder containing large amounts of data
- * As a table (horizontal, vertical, form or cross table)
- * As a chart (bar, box, column, line, map, pie, point, radar or tag cloud)
- * As a multiple-block report containing large amounts of data

NEW QUESTION 41

Which Web Intelligence component should you use to list the existing variables in a report?

Please choose the correct answer.

Response:

- * Report Manager
- * Formula Editor
- * Variable Editor
- * Slice and Dice Panel

NEW QUESTION 42

What are the benefits of using SAP BusinessObjects Web Intelligence? Note: There are 2 correct Answers to this question.

- * You can dynamically refresh and update information directly in your MS Office documents.
- * You can drill, slice-and-dice, and format information based on your business needs.
- * You can use simple drag-and-drop features to create interactive reports.
- * You can centrally manage, control, and configure your BI deployment.

NEW QUESTION 43

Where can you set the priority options for saving a Web Intelligence document (WID) to Microsoft Excel?

Please choose the correct answer.

Response:

- * Web Intelligence
- * InfoView Preferences
- * Microsoft Excel File Options
- * Web Intelligence Rich Client

NEW QUESTION 44

Which three objects represent qualifications from a local data provider?

There are 3 correct answers to this question.

Response:

- * BLOB
- * DATE
- * TEXT
- * NUMBER

NEW QUESTION 45

Which of the following sequence is correct -To Insert a Block in Each Section?

Please choose the correct answer.

Response:

- * Click Report Element Map Insert Column Chart
- * Click Report Element Report Insert Column Chart
- * Click Report Element Chart Insert Column Chart
- * Click Report Element Sec on Insert Column Chart

NEW QUESTION 46

Which three options are default page number cells?

There are 3 correct answers to this question.

Response:

- * Page Number
- * Total Number of Pages
- * Page Number / Total Pages
- * Total Number of Pages in Section

NEW QUESTION 47

Which two are benefits of creating queries from existing queries?

There are 2 correct answers to this question.

Response:

- * Improved query security
- * Accurate duplication of query parameters
- * Improved performance of query execution
- * Reduced creation time for complex reports

NEW QUESTION 48

Where can you use a free-standing cell?

- * In a table
- * In a section
- * In the query panel
- * In a chart

NEW QUESTION 49

Which three elements are parts of a query filter?

There are 3 correct answers to this question.

Response:

- * Class
- * Object
- * Operator
- * Operand

NEW QUESTION 50

What can you do with a scope of analysis? Note: There are 2 correct Answers to this question.

- * Provide further detail on data.
- * Restrict the data retrieved from the database only to the objects on the report.
- * Request the data from the database for drilling.
- * Perform a calculation.

NEW QUESTION 51

What happens if an optional prompt is blank when you execute a query?

- * The query filter is ignored.
- * The query is filtered by the last value selected.

- * The query is filtered by the default value of the prompt.
- * The query returns an empty record set.

NEW QUESTION 52

What object type is found in navigation paths?

- * Filter
- * Measure
- * Dimension
- * Attribute

NEW QUESTION 53

What is the procedure to Display the data in the table as an image that maintains the original formatting?

Please choose the correct answer.

Response:

- * Right-click the table and, from the contextual menu, select Copy
- * Drag data in a table in the target application and you can add the data contained in the table, click copy and paste
- * Drag and drop the table from Web Intelligence to the target application
- * Right- click the table to the target application and maintain the formatting from Web Intelligence

NEW QUESTION 54

What is the correct formula for the RunningSum column (shown in the attached graphic)?

Year	Quarter	Sales revenue	Running Sum
2011	Q1	\$2,660,699.50	\$2,660,699.50
	Q2	\$2,278,693.40	\$4,939,392.90
	Q3	\$1,367,840.70	\$6,307,233.60
	Q4	\$1,788,580.40	\$8,095,814.00
2011			
2012	Q1	\$3,326,172.20	\$3,326,172.20
	Q2	\$2,840,650.80	\$6,166,823.00
	Q3	\$2,879,303.00	\$9,046,126.00
	Q4	\$4,186,120.00	\$13,232,246.00
2012			
2013	Q1	\$3,742,988.90	\$3,742,988.90
	Q2	\$4,006,717.50	\$7,749,706.40
	Q3	\$3,953,395.30	\$11,703,101.70
	Q4	\$3,356,041.10	\$15,059,142.80
2013			

- * RunningSum([Sales revenue];([Year]))
- * RunningSum([Sales revenue] in [Quarter])
- * RunningSum([Sales revenue];([Year];[Quarter]))
- * RunningSum([Sales revenue];[Year];[Quarter])

NEW QUESTION 55

How do you change the dimension on which a section is based?

- * Right click the section cell. Select Sort. Select Advanced. Remove the existing dimension. Add the new dimension.
- * Right click the section cell. Select Edit Formula. Choose the new dimension.
- * Right click in a blank area of the section. Select Edit Section. Choose the new dimension.
- * Right click in a blank area of the section. Select Format Section. Modify dimension after “Section on:”.

NEW QUESTION 56

What are the two relational operators that can be used with wildcard Characters, in a query filter?

There are 2 correct answers to this question

Response:

- * Design pattern: to find values that match the design you specify
- * Matches pattern: to find values that match the pattern you specify
- * Different from pattern: to find values different than the pattern you specify
- * Defined pattern: to find values that match the defined pattern you specify

Fully Updated Dumps PDF - Latest C_BOWI_43 Exam Questions and Answers:

https://www.actualtests4sure.com/C_BOWI_43-test-questions.html