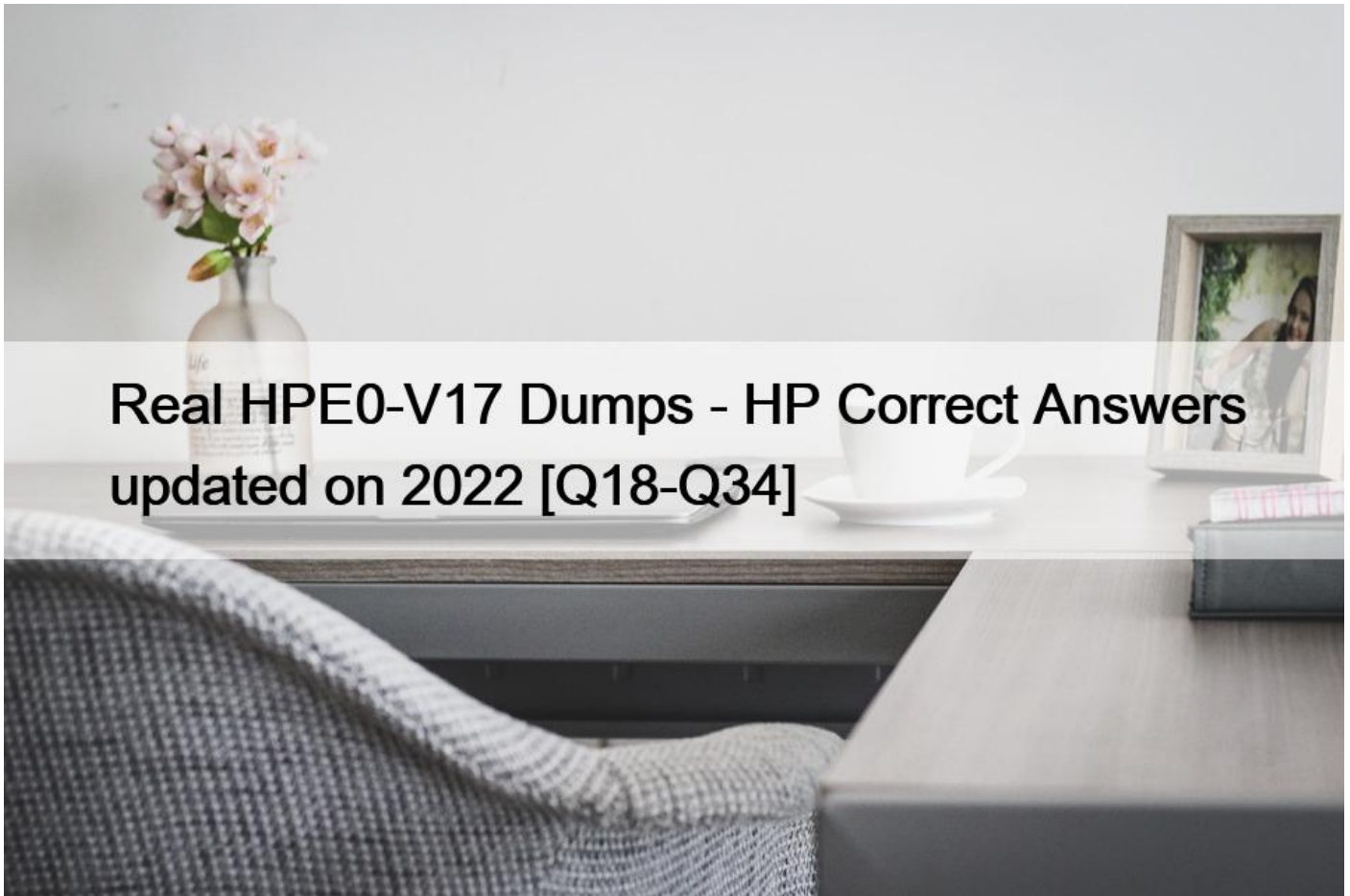


Real HPE0-V17 Dumps - HP Correct Answers updated on 2022 [Q18-Q34]



Use Real HPE0-V17 Dumps - HP Correct Answers updated on 2022
HPE Master ASE HPE0-V17 Exam Practice Dumps

HP HPE0-V17 Exam Syllabus Topics:

TopicDetailsTopic 1- Identify the components within a DP solution and describe their roles- Describe the StoreEver portfolio and optionsTopic 2- Differentiate between zero copy clones, smart clones, and snapshots- Determine the appropriate backup targetTopic 3- Determine appropriate internal and external encryption- Describe the different DP licensing optionsTopic 4- Identify the components within a Commvault solution and describe their roles- Determine where the various components are deployedTopic 5- Differentiate between StoreOnce and the competition- Differentiate between deduplication and compressionTopic 6- Describe the StoreOnce integration with InfoSight- Contrast internal and external encryptionTopic 7- Display an awareness of key points regarding other relevant ISVs- Explain the use and licensing of HPE Cloud Bank StorageTopic 8- Distinguish between VTL and StoreEver, being able to recommend using both or just one- Explain encryption and how keys are managed

NO.18 A customer has deployed a hyperconverged environment based on HPE Simplivity at a number of their sites.

Before migrating workloads to the environment, you ask them about the backup policies In an HPE simpliVity solution to protect the actual data is this a design consideration that you should mention to your customer?

Solution: The preference of COW (Copy-On-Write) or ROW (Redirect-On-Write) -based snapshots

- * Yes
- * No

NO.19 Your customer deployed Micro Focus Data Protector as the data protection solution for their HPE 3PAR storage infrastructure in combination with HPE StoreOnce appliances. They contact you regarding options to extend data protection towards the cloud Is this a valid option for your customer?

Solution Micro Focus Data Protector has no native cloud Integration and is dependent of the backup target appliance to send data towards solutions like HPE StoreOnce Cloud Bank

- * Yes
- * No

NO.20 Refer to the exhibit.

Your customer is sending backup jobs lo an HPE StoreOnce backup target. They notice big differences on the deduplication and replication ratios between two jobs on consecutive days. The same type of data was backed up on both occasions Saturday backup:

Backup job: Bitcon VM backup (Full) Created by BITCON\administrator at 29/10/2013 12:46:40							
Saturday 15 February 2020 23:30:00							
Success	6	Start time	23:30:00	Total size	600 GB	Backup size	216.5 GB
Warning	0	End time	0:49:48 (+1)	Data read	367.9 GB	Dedupe	1.8x
Error	0	Duration	1:19:48	Transferred	218.4 GB	Compression	1.6x

Sunday backup:

Backup job: Bitcon VM backup Created by BITCON\administrator at 29/10/2013 12:46:40							
Sunday 16 February 2020 23:30:14							
Success	6	Start time	23:30:14	Total size	600 GB	Backup size	6.5 GB
Warning	0	End time	23:48:13	Data read	29.1 GB	Dedupe	1.0x
Error	0	Duration	0:17:59	Transferred	6.5 GB	Compression	2.6x

is this a correct statement about the differences between the two backups?

Solution: Deduplication is completely dependent on the type of user data being sent to the backup application This result means the users have created more duplicate data on Saturday compared to Sunday.

- * Yes
- * No

NO.21 You have a meeting with a customer to discuss a new backup solution requirement. Is this a step in the information gathering process for the current solution?

Solution: You launch a NinjaProtected + process to run scripts on the customer's backup server to collect all information on the current DacKup configuration.

HPE will create a report based on the output of the scripts to create a sizing based on the current workload.

- * Yes
- * No

NO.22 You are organizing a Proof-of-Concept (PCX:) for your customer for their new data protection solution based on Commvault technology in combination with HPE Nimble storage and HPE StoreOnce backup targets.

The customer asks you to demonstrate the configuration options for deduplication within the Commvault solution Is this a location where you can modify the deduplication parameters?

Solution: Access the Advanced Client Properties screen under Client Computers

- * Yes
- * No

NO.23 You are organizing a Proof-of-Concept (POC) for your customer for their new data protection solution based on Commvault technology in combination with HPE Nimble storage and HPE StoreOnce backup targets.

The customer asks you to demonstrate the configuration options for deduplication within the Commvault solution is this a location where you can modify the deduplication parameters?

Solution: Navigate to the Agents section and show the different parameters inside the Backup. Archive, Normalization and Replication agents

- * Yes
- * No

NO.24 You need to meet with a customer about replacing their aging EMC Data Domain-based platform with a new solution is this a tool that you could use to effectively assess current backup deployment?

Is this a tool that you could use to effectively assess current backup deployment?

Solution: NinjaStars

- * Yes
- * No

NO.25 Is this a valid statement regarding Commvault components?

Solution: For larger environments where high availability is critical, the CommServe server can be clustered

- * Yes
- * No

NO.26 A customer wants to discuss their current backup environment

While walking to the meeting room, you pass what the customer tells you is their only computer room. You notice they have a mix of ProLiant DL servers, three Synergy frames, Nimble, and a MSL3040 in the racks.

Is this a tool you can use to gather information on the current backup data to size a new solution?

Solution: Ninja Protected+

- * Yes
- * No

NO.27 Is this a supported integration with StoreOnce Catalyst?

Solution: Microsoft SharePoint

- * Yes
- * No

NO.28 You are working with your customer on the advantages and disadvantages of various data protection schemes. They currently have a storage solution with 2 HPE 3PAR arrays with Peer Persistence. This is used to make backups to an HPE StoreOnce VTU backup target using Commvault. Will this recommendation enhance the data protection plan?

Solution: Follow the 3-2-1-1-0 rule

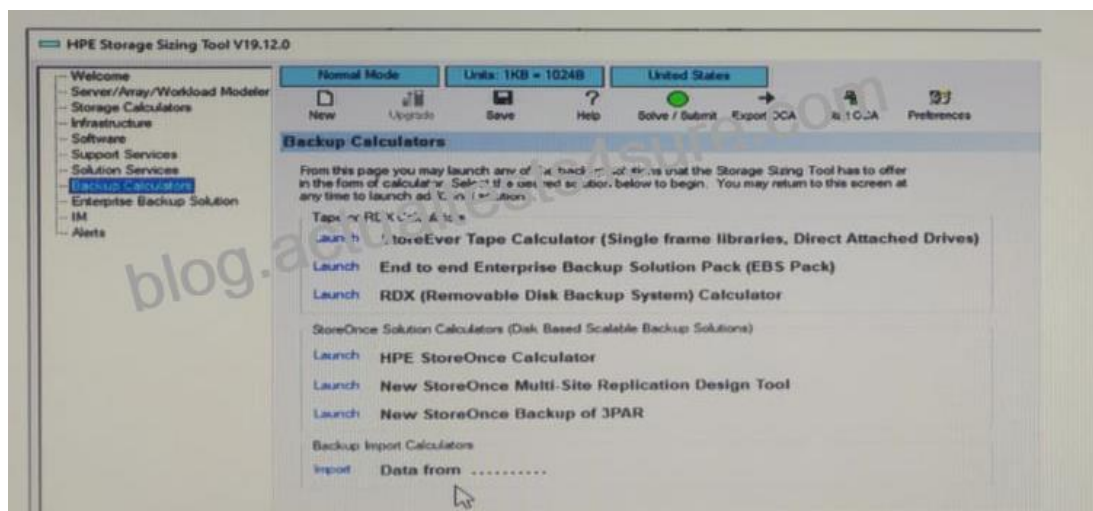
- * Yes
- * No

NO.29 Is this a reason why your customer might choose the HPE Apollo 4510 systems instead of the HPE Apollo 4200 system?

Solution: The Apollo 4510 system has a higher density chassis, and so can host more drives with more backup capacity

- * Yes
- * No

NO.30 Refer to the exhibit.



You plan to use the HPE Storage Sizing Tool for an HPE backup environment, as shown in the exhibit. Instead of manually entering

all gathered information, you want to use the Import option for fast and efficient sizing of a backup environment.

is this a tool that generates data that can be imported to the HPE Storage Sizer Tool?

Solution: Is this a tool that generates data that can be imported to the HPE Storage Sizer Tool?

NinjaProtected+

- * Yes
- * No

NO.31 Your customer wants to replace an aging tape library with a new data protection solution that improves their RTO/RPSs. Their existing platform consists of HPE ProLiant OL380 Genio and 8GD FC connected Nimble Arrays. You recommend an HPE StoreOnce appliance and Veeam software. Is this a true statement?

Solution: Veeam supports HPE StoreOnce VTL.

- * Yes
- * No

NO.32 Is this a correct statement about Veeam Explorer in combination with HPE storage?

Solution: Veeam Explorer can instantly recover a VM from a storage snapshot without prior designing and Intermediate restores.

- * Yes
- * No

NO.33 As it relates to application consistent backups, does this statement accurately describe the volume Shadow copy Service (VSS)?

Solution: The use of the VSS mechanism is only possible on Windows based VMs.

- * Yes
- * No

NO.34 You are showing your customer how Veeam integrates with HPE storage products, such as HPE Nimble and HPE 3PAR. You show how Veeam can restore in a fast and efficient way from HPE storage snapshots. Is this a correct statement?

Solution: The HPE Nimble Storage Replication Adapter (SRA) for VMware must be installed on the host running VMware.

- * Yes
- * No

Get ready to pass the HPE0-V17 Exam right now using our HPE Master ASE Exam Package:

<https://www.actualtests4sure.com/HPE0-V17-test-questions.html>