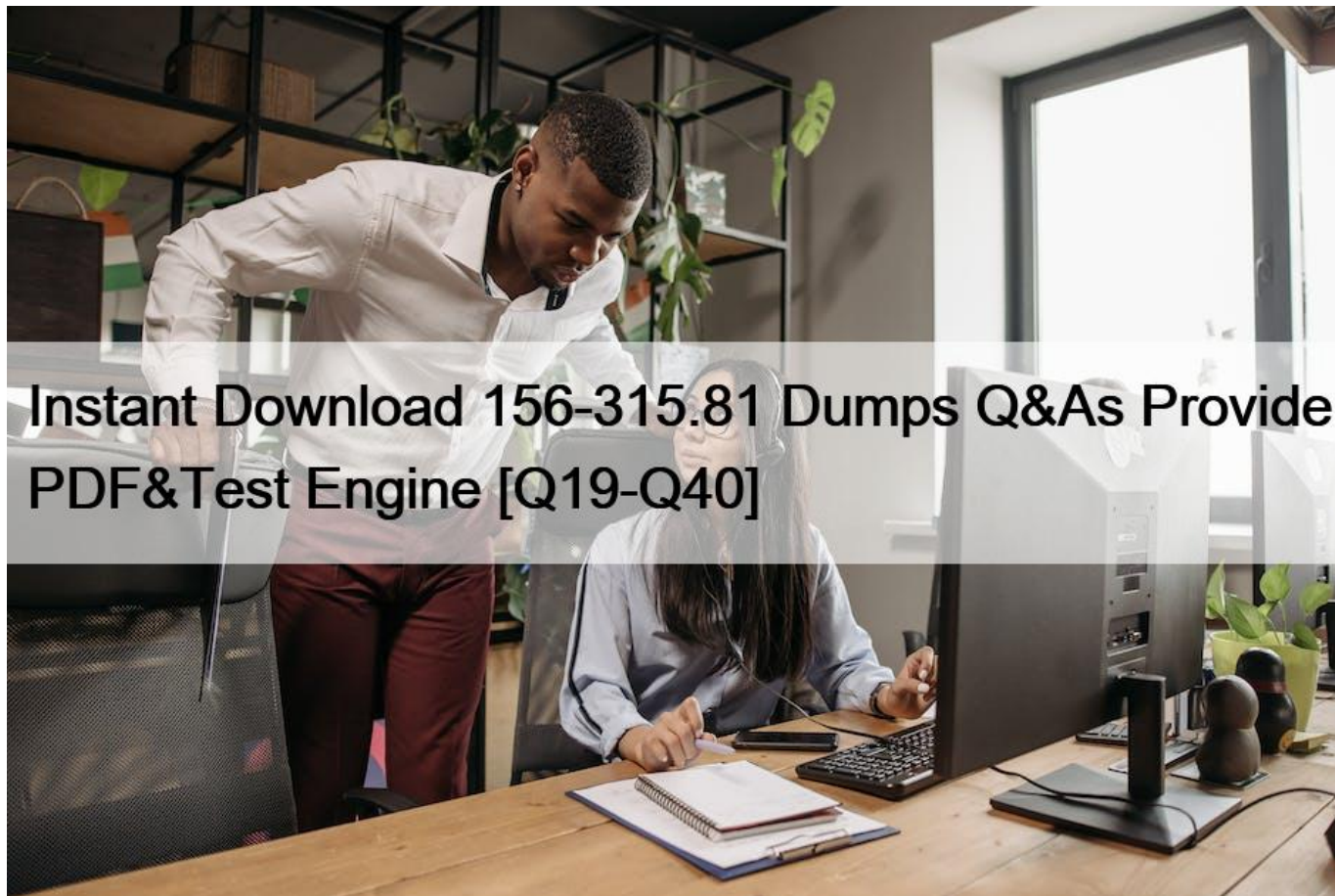


Instant Download 156-315.81 Dumps Q&As Provide PDF&Test Engine [Q19-Q40]



Instant Download 156-315.81 Dumps Q&As Provide PDF&Test Engine [Q19-Q40]

Instant Download 156-315.81 Dumps Q&As Provide PDF&Test Engine Fast Exam Updates 156-315.81 dumps with PDF Test Engine Practice

CheckPoint 156-315.81 Exam Syllabus Topics:

TopicDetailsTopic 1- Describe how the CoreXL acceleration technology enhances and improves Security Gateway performance- Describe the essential elements of a Security PolicyTopic 2- Explain how the SecureXL acceleration technology enhances and optimizes Security Gateway performance- Discuss how SmartEvent can assist in reporting security threatsTopic 3- Describe advanced ClusterXL functions and modes like Load Sharing,Active-Active, VMAC mode etc- Understand the Infinity Threat Prevention systemTopic 4- Understand how to enable the Application Control and URL Filtering software- Describe the components of SmartEvent and their deployment optionsTopic 5- Describe different Check Point Threat Prevention solutions for network attacks- Learn how Check Point security solutions and products work and how they protect networksTopic 6- Discuss Check Point Remote Access solutions and how they differ from each other- Explain how to set action items to meet the complianceTopic 7- Discuss how SmartEvent functions to identify critical security issues- Understand how SmartConsole is used by administrators to give user accessTopic 8- Explain how to determine if the configuration is compliant with the best practices- Understand licensing and contract requirements for Check Point security productsTopic 9- Describe how to analyze and interpret VPN tunnel traffic- Describe the basic functions of the Gaia operating system

The CheckPoint 156-315.81 exam is designed for professionals who seek to validate their knowledge and skills in Check Point's latest security technologies and solutions. This certification exam is part of the Check Point Certified Security Expert (CCSE) R81 certification track, which is one of the most recognized and respected credentials in the cybersecurity industry. The exam is intended for security administrators, engineers, and consultants who are responsible for managing and deploying Check Point's security solutions in complex network environments.

The CheckPoint 156-315.81 exam is an essential certification for security professionals who want to specialize in Check Point's security technologies. It covers a range of advanced topics and tests both theoretical knowledge and practical skills. The CCSE R81 certification is highly valued in the security industry and is recognized by organizations around the world. It is an ideal credential for security professionals who want to advance in their careers or take on new challenges.

NEW QUESTION 19

You have a Gateway is running with 2 cores. You plan to add a second gateway to build a cluster and used a device with 4 cores.

How many cores can be used in a Cluster for Firewall-kernel on the new device?

- * 3
- * 2
- * 1
- * 4

NEW QUESTION 20

You want to store the GAIA configuration in a file for later reference. What command should you use?

- * write mem <filename>
- * show config -f <filename>
- * save config -o <filename>
- * save configuration <filename>

NEW QUESTION 21

Fill in the blank: Permanent VPN tunnels can be set on all tunnels in the community, on all tunnels for specific gateways, or _____

.

- * On all satellite gateway to satellite gateway tunnels
- * On specific tunnels for specific gateways
- * On specific tunnels in the community
- * On specific satellite gateway to central gateway tunnels

NEW QUESTION 22

What command lists all interfaces using Multi-Queue?

- * cpmq get
- * show interface all
- * cpmq set
- * show multiqueue all

NEW QUESTION 23

With MTA (Mail Transfer Agent) enabled the gateways manages SMTP traffic and holds external email with potentially malicious attachments. What is required in order to enable MTA (Mail Transfer Agent) functionality in the Security Gateway?

- * Threat Cloud Intelligence
- * Threat Prevention Software Blade Package
- * Endpoint Total Protection
- * Traffic on port 25

NEW QUESTION 24

You can access the ThreatCloud Repository from:

- * R81.10 SmartConsole and Application Wiki
- * Threat Prevention and Threat Tools
- * Threat Wiki and Check Point Website
- * R81.10 SmartConsole and Threat Prevention

NEW QUESTION 25

Which command is used to add users to or from existing roles?

- * Add rba user <User Name> roles <List>
- * Add rba user <User Name>
- * Add user <User Name> roles <List>
- * Add user <User Name>

NEW QUESTION 26

What is considered Hybrid Emulation Mode?

- * Manual configuration of file types on emulation location.
- * Load sharing of emulation between an on premise appliance and the cloud.
- * Load sharing between OS behavior and CPU Level emulation.
- * High availability between the local SandBlast appliance and the cloud.

NEW QUESTION 27

Which application should you use to install a contract file?

- * SmartView Monitor
- * WebUI
- * SmartUpdate
- * SmartProvisioning

NEW QUESTION 28

Packet acceleration (SecureXL) identifies connections by several attributes. Which of the attributes is NOT used for identifying connection?

- * Source Port
- * TCP Acknowledgment Number
- * Source Address
- * Destination Address

NEW QUESTION 29

D18912E1457D5D1DDCBD40AB3BF70D5D

The system administrator of a company is trying to find out why acceleration is not working for the traffic. The traffic is allowed according to the rule based and checked for viruses. But it is not accelerated. What is the most likely reason that the traffic is not accelerated?

- * The connection is destined for a server within the network
- * The connection required a Security server
- * The packet is the second in an established TCP connection
- * The packets are not multicast

NEW QUESTION 30

How can you switch the active log file?

- * Run fw logswitch on the gateway
- * Run fwm logswitch on the Management Server
- * Run fwm logswitch on the gateway
- * Run fw logswitch on the Management Server

https://sc1.checkpoint.com/documents/R81/WebAdminGuides/EN/CP_R81_NextGenSecurityGateway_Guide/Topics-FWG/CLI/fw-logswitch.htm

NEW QUESTION 31

What are the three SecureXL Templates available in R81.10?

- * PEP Templates. QoS Templates. VPN Templates
- * Accept Templates. Drop Templates. NAT Templates
- * Accept Templates. Drop Templates. Reject Templates
- * Accept Templates. PDP Templates. PEP Templates

NEW QUESTION 32

Which Check Point daemon invokes and monitors critical processes and attempts to restart them if they fail?

- * fwm
- * cpd
- * cpwd
- * cpm

NEW QUESTION 33

Why is a Central License the preferred and recommended method of licensing?

- * Central Licensing actually not supported with Gaia.
- * Central Licensing is the only option when deploying Gaia.
- * Central Licensing ties to the IP address of a gateway and can be changed to any gateway if needed.
- * Central Licensing ties to the IP address of the management server and is not dependent on the IP of any gateway in the event it changes.

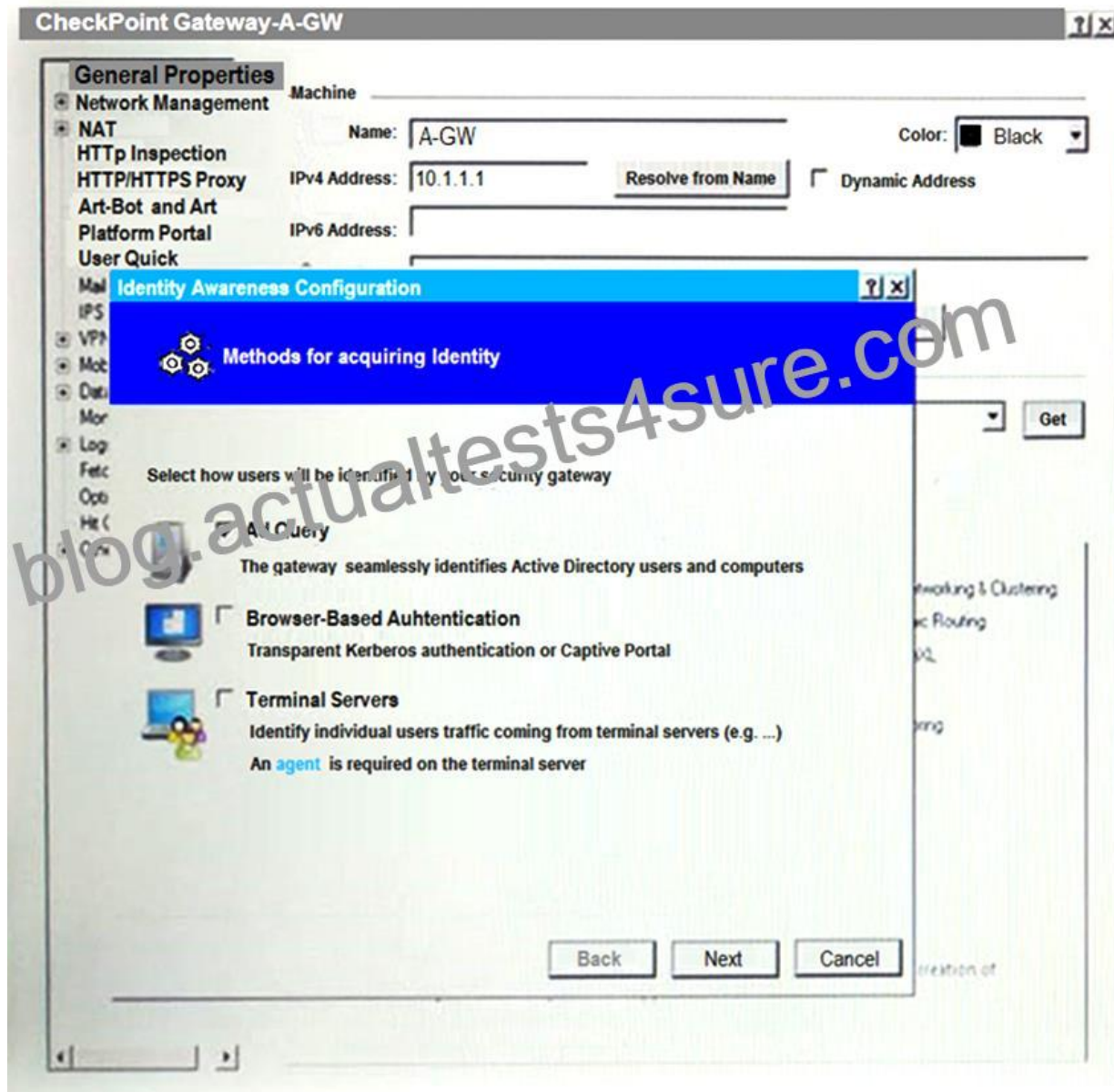
NEW QUESTION 34

Which command would you use to set the network interfaces' affinity in Manual mode?

- * sim affinity -m
- * sim affinity -l
- * sim affinity -a
- * sim affinity -s

NEW QUESTION 35

On the following picture an administrator configures Identity Awareness:



After clicking 'Next', the above configuration is supported by:

- * Kerberos SSO which will be working for Active Directory integration
- * Based on Active Directory integration which allows the Security Gateway to correlate Active Directory users and machines to IP addresses in a method that is completely transparent to the user.

- * Obligatory usage of Captive Portal.
- * The ports 443 or 80 what will be used by Browser-Based and configured Authentication.

NEW QUESTION 36

What is the command to check the status of Check Point processes?

- * top
- * cptop
- * cphaprob list
- * cpwd_admin list

NEW QUESTION 37

What is mandatory for ClusterXL to work properly?

- * The number of cores must be the same on every participating cluster node
- * The Magic MAC number must be unique per cluster node
- * The Sync interface must not have an IP address configured
- * If you have “Non-monitored Private” interfaces, the number of those interfaces must be the same on all cluster members

NEW QUESTION 38

In which VPN community is a satellite VPN gateway not allowed to create a VPN tunnel with another satellite VPN gateway?

- * Pentagon
- * Combined
- * Meshed
- * Star

NEW QUESTION 39

According to the policy installation flow the transfer state (CPTA) is responsible for the code generated by the FWM. On the Security Gateway side a process receives them and first stores them Into a temporary directory. Which process is true for receiving these Tiles;

- * FWD
- * CPD
- * FWM
- * RAD

NEW QUESTION 40

Name the file that is an electronically signed file used by Check Point to translate the features in the license into a code?

- * Both License (.lic) and Contract (.xml) files
- * cp.macro
- * Contract file (.xml)
- * license File (.lic)

Exam Valid Dumps with Instant Download Free Updates: <https://www.actualtests4sure.com/156-315.81-test-questions.html>