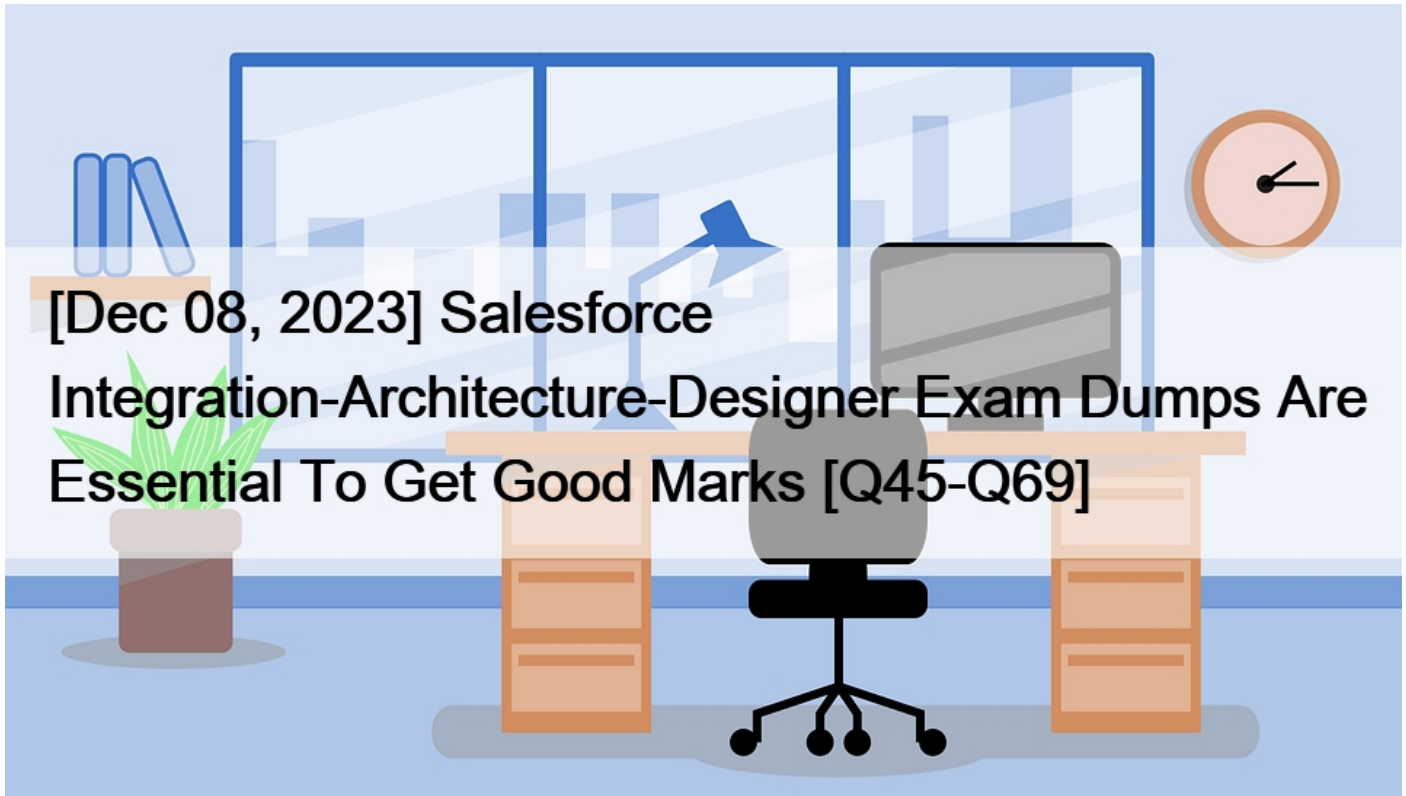


## [Dec 08, 2023 Salesforce Integration-Architecture-Designer Exam Dumps Are Essential To Get Good Marks [Q45-Q69]



[Dec 08, 2023] Salesforce Integration-Architecture-Designer Exam Dumps Are Essential To Get Good Marks  
Latest Salesforce Integration-Architecture-Designer Dumps with Test Engine and PDF (New Questions)

Passing the Salesforce Integration-Architecture-Designer exam requires a deep understanding of Salesforce integration and architecture. Candidates must have hands-on experience designing and implementing integration solutions using Salesforce, as well as a thorough understanding of integration patterns, data migration, API design, security, and governance. Successful candidates will be able to provide effective solutions for integrating Salesforce with other systems, ensuring that data is accurately and securely transferred between systems.

**Q45.** A call center manager uses a custom dashboard to track Case related metrics. The manager wants a component to display the number of closed Cases in real time.

What type of event should be used to meet this requirement?

- \* Push Topic Event
- \* Change Data Capture Event
- \* Platform Event
- \* Generic Event

Explanation

[https://developer.salesforce.com/docs/atlas.en-us.api\\_streaming.meta/api\\_streaming/pushtopic\\_events\\_intro.htm](https://developer.salesforce.com/docs/atlas.en-us.api_streaming.meta/api_streaming/pushtopic_events_intro.htm)

**Q46.** What are three capabilities of Salesforce outbound messaging?

Choose 3 answers

- \* Provide a session ID as part of the outbound message.
- \* Repeatedly send a SOAP notification for up to 24 hours until an acknowledgement is received.
- \* Build integration components without the Use of APEX.
- \* Define a WSDL based upon 2 objects related via Master-Detail relationship.
- \* Define a custom WSDL based upon an Apex Interface class definition.

**Q47.** A company accepts payment requests 24x7. Once they accept a payment request, their service level agreement (SLA) requires them to make sure each payment request is processed by their Payment System. They track payment requests using a globally unique identifier created at the Data Entry Point. Their simplified flow is as shown in the diagram.

They encounter intermittent update errors when two or more processes try to update the same Payment Request record at the same time.

Which two recommendations should an integration architect make to improve their SLA and update conflict handling?

Choose 2 answers

- \* Middleware should coordinate request delivery and payment processing.
- \* Data Entry Point and Middleware should automatically retry requests.
- \* Payment System should process a payment request only once.
- \* Payment System and Middleware should automatically retry requests.

**Q48.** The Sales Operations team at Northern Trail Outfitters imports new leads each day. An integrated legacy territory management system assigns territories to leads before Sales team members can work on them. The current integration often experiences latency issues.

Which two recommendations should an Architect make to improve the integration performance?

Choose 2 answers

- \* Reduce batch size of asynchronous BULK API.
- \* Reduce batch size of synchronous BULK API.
- \* Legacy system should submit in serial mode.
- \* Legacy system should submit in parallel mode.

**Q49.** An organization needs to integrate Salesforce with an external system and is considering authentication options. The organization already has implemented SAML, using a third-party Identity Provider for integrations between other systems.

Which use case can leverage the existing SAML integration to connect Salesforce with other internal systems?

- \* Make formula fields with HYPERLINK() to external web servers more secure.
- \* Make Apex SOAP outbound integrations to external web services more secure.
- \* Make Apex REST outbound integrations to external web services more secure.
- \* Make an API inbound integration from an external Java client more secure.

**Q50.** A company wants to standardize exception tracking, handling, and analytics. Given the following actions:

1. Build a company wide logging service hosted on a middleware platform
2. Create case object records for exceptions based thresholds
3. Change all their Apex Loggers to publish Application Exceptions as custom Platform Events.

Which two specifications should the integration architect include in the logging service architecture?

Choose 2 answers

- \* Receive Application Events through Change Data Capture (CDC).
- \* Create Salesforce Cases using the Salesforce REST, SOAP or Bulk API.
- \* Create Salesforce Cases conditionally using automatic Case creation rules.
- \* Subscribe to the Application Exceptions using the Salesforce Streaming API.

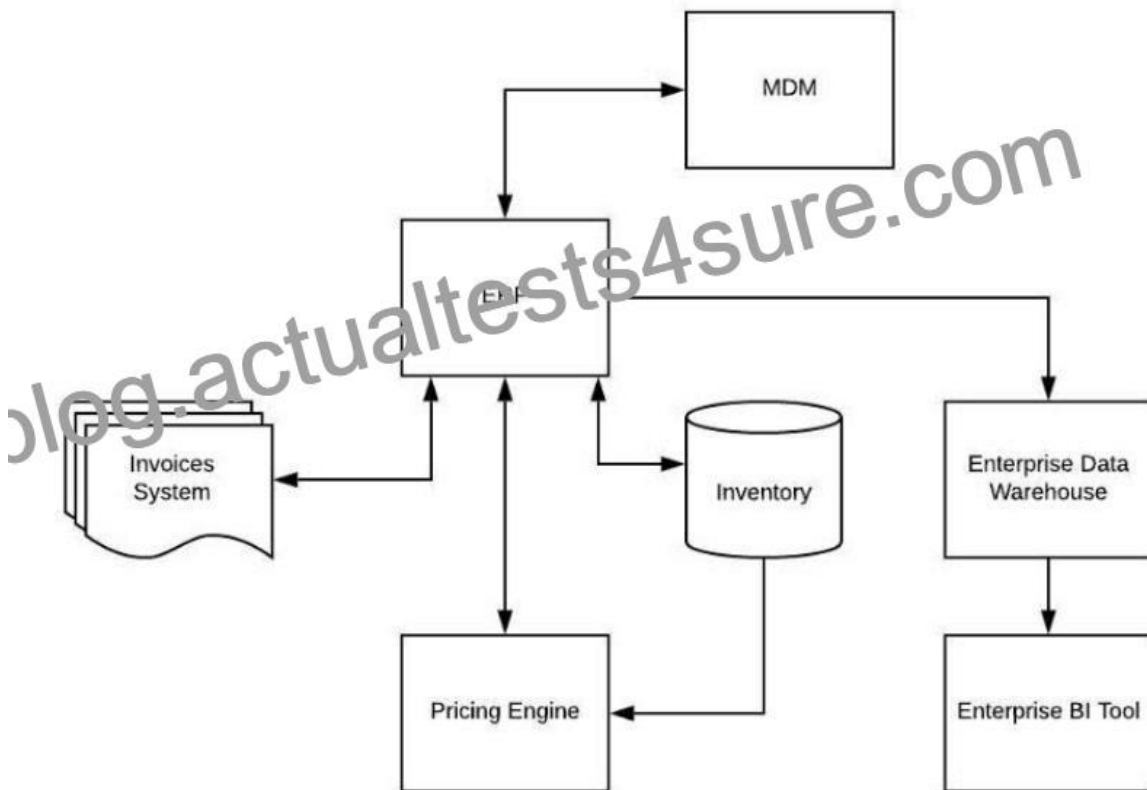
**Q51.** Universal containers has used Outbound Messaging to integrate with their billing system. Their billing system has frequent outages that don't last more than a couple of hours.

Which two aspects of Outbound Messaging might the customer experience issues with as a result of these outages?

Choose 2 answers

- \* Out-of-order delivery.
- \* Duplicate messages
- \* Orphaned Requests
- \* Exceeding Governor Limits.

**Q52.** A large enterprise customer with the following system landscape is planning to implement Salesforce Sales Cloud.



The following business processes need to be supported in Salesforce:

1. Sales Consultants should be able to have access to current inventory.
2. Enterprise Resource Planning System(ERP) is the system of record for pricing information.
3. Quotes should be generated in Salesforce with pricing from ERP.
4. Sales Management uses a Enterprise Business Intelligence (BI) tool to view Sales dashboards.
5. Master Data Management (MDM) is the system of record for customers and prospects.
6. Invoices should be accessible in Salesforce.

Which systems in the landscape should the Integration Consultant consider to be integrated with Salesforce to support the business requirements?

- \* ERP, Invoices system, Data Warehouse and BI Tool
- \* ERP, Inventory, Pricing Engine, Invoices system
- \* ERP, MDM, BI tool and Data Warehouse
- \* ERP, MDM, Data Warehouse, Invoices system

**Q53.** Universal Containers is building an integration between Salesforce and their Accounting system. The integration will utilize outbound messaging with call back pattern to Salesforce. The security officer would like to understand the authentication solution.

What are the three ways that the call back can authenticate itself to Salesforce?

Choose 3 answers

- \* Utilize the Enterprise WSDL login() operation to obtain a new session ID.
- \* Utilize an OAuth Username-Password flow to obtain a new OAuth token for the session ID.
- \* Utilize the REST API login() operation to obtain a new session ID
- \* Utilize the session ID contained within the outbound message notification as the authorization header.
- \* Utilize the partner WSDL with OAuth to obtain a valid OAuth token for the session ID.

**Q54.** Northern Trail Outfitters is seeking to improve the performance and security of outbound integrations from Salesforce to on-premise servers.

What should the Architect consider before recommending a solution?

- \* External gateway products in use
- \* A Default gateway restrictions
- \* Considerations for using Deterministic Encryption
- \* Shield Platform Encryption Limitations

**Q55.** Northern Trail Outfitters wants to improve the quality of call-outs from Salesforce to their REST APIs. For this purpose, they will require all API clients/consumers to adhere to RESTAPI Markup Language (RAML) specifications that include field-level definition of every API request and response payload. RAML specs serve as interface contracts that Apex REST API Clients can rely on.

Which two design specifications should the Integration Architect include in the integration architecture to ensure that Apex REST

API Clients unit tests confirm adherence to the RAML specs?

Choose 2 answers

- \* Call the Apex REST API Clients in a test context to get the mock response.
- \* Require the Apex REST API Clients to implement the HttpCalloutMock.
- \* Call the HttpCalloutMock implementation from the Apex REST API Clients.
- \* Implement HttpCalloutMock to return responses per RAML specification.

**Q56.** A customer of Salesforce has used Platform Events to integrate their Salesforce instance with an external third party Artificial Intelligence (AI) system. The AI system provides a prediction score for each lead that is received by Salesforce. Once the prediction score is received, the lead information is saved to Platform events for other processes. The trigger on the Platform Events is failing once this was rolled out to Production.

What type of monitoring should the Integration Consultant have considered to monitor this integration?

- \* Monitor Platform Events created per hour limits across the Salesforce instance.
- \* Set up debug logs for Platform Event triggers to monitor performance .
- \* Validate the Platform Event definition matches leads definition.
- \* Monitor the volume of leads that are created in Salesforce.

**Q57.** Universal Containers (UC) uses Salesforce to create and manager accounts and opportunities. With Salesforce being the master of records, the opportunities on existing accounts are required to be updated with product usage statistics from an on-premise usage tracking system that is capable of participating in contract-first integration.

Which three steps should the Integration Architect consider given that UC does not want any custom development in Salesforce?

- \* Create a Workflow outbound message during Opportunity creation and provide the Opportunity ID and Session ID to the remote system.
- \* Use a REST API callback to update the Opportunity record with the product usage data from the remote system.
- \* Create a Process Builder outbound message during Opportunity creation and provide the Opportunity ID and Session ID to the remote system.
- \* Use a SOAP API callback to update the Opportunity record with the product usage data from the remote system.
- \* Generate a partner WSDL in Salesforce and provide it to the remote system to create a client stub.

**Q58.** Universal Containers is integrating their Salesforce platform with their on-premise ERP system. As part of the test class design DML operations are to be performed before making the test callout.

What capability does Salesforce provides to facilitate this?

- \* Perform the DML operation within the Test.StartTest and Test.Stop Test and make the callout within Test.StartTest and Test.StopTest block.
- \* Perform the DML operation outside the Test.StartTest and Test.StopTest and make the callout with the Test.StartTest and Test.StopTest block.
- \* Perform the DML operation inside the Test.StartTest and Test.Stop Test and make the callout outside the Test.StartTest and Test.Stop Test block.
- \* Perform the DML operation outside the Test.StartTest and Test.StopTest and make the callout outside of the Test.StartTest and Test.StopTest block.

**Q59.** The director of customer service at Northern Trail Outfitters (NTO) wants to capture and trend specific business events that occur in Salesforce in real time. The metrics will be accessed in an ad-hoc manner using an external analytics system. The events that are of interest are:

A customer has initiated a product exchange via a Case A customer service rep clicks on the `&#8220;Authorize Exchange`

Product; menu item on the Case A customer has initiated a subscription cancellation via a Case A customer service rep clicks on the ;Initiate Refund; menu item on the Case Which two solutions will meet these business requirements?

Choose 2 answers

- \* Case after insert Trigger that executes a callout.
- \* Case Workflow Rule that sends an Outbound Message.
- \* Case after insert Trigger that publishes a Platform Event.
- \* Custom Apex controller that publishes a Platform Event.

**Q60.** An Architect is asked to build a solution that allows a service to access Salesforce through the API. What is the first thing the Architect should do?

- \* Create a new user with System Administrator profile.
- \* Authenticate the integration using existing Single Sign-On.
- \* Authenticate the integration using existing Network-BasedSecurity.
- \* Create a special user solely for the integration purposes.

**Q61.** When making an Apex callout, what approach should an Integration Architect recommend for securely transporting sensitive data from Salesforce over an unsecure network connection?

- \* Base64 encode the data before performing the call out from Apex.
- \* Encrypt the data with a shared key before performing the Apex callout.
- \* Use platform Encryption to secure the data before transporting.
- \* Salesforce automatically secures all data transmissions to external systems.

**Q62.** Which two options should be considered to permit automatic retry of failed updates when loading data into Salesforce?

Choose 2 answers

- \* Bulk API with serial option.
- \* Standard API with parallel option.
- \* Bulk API with parallel option.
- \* Standard API with serial option.

**Q63.** What Salesforce technology should an Integration Architect consider when needing to securely expose an external system User Interface from within the Salesforce UI and provide that system with information about the user?

- \* Visualforce
- \* Custom Web Tab
- \* Canvas
- \* Lightning Component

**Q64.** Northern Trail Outfitters needs to send order and line items directly to an existing finance application webservice when an order is fulfilled. It is critical that each order reach the finance application exactly once for accurate invoicing.

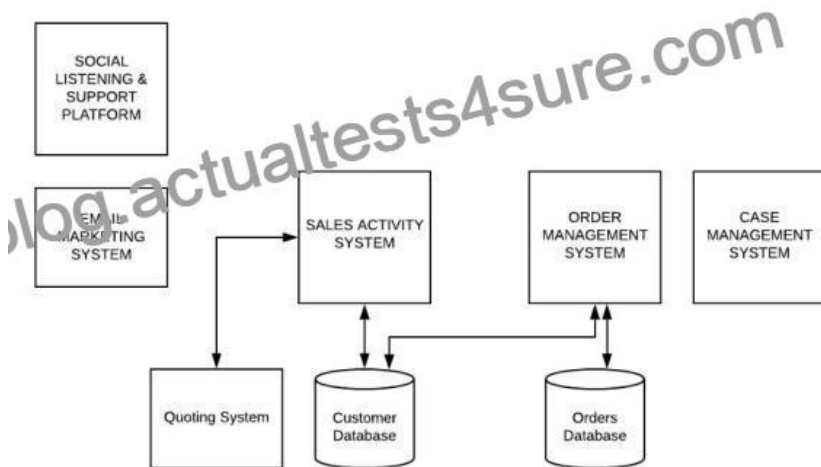
What solution should an architect propose?

- \* Trigger invokes Queueable Apex method, with custom error handling process.
- \* Trigger makes @future Apex method, with custom error handling process.
- \* Button press invokes synchronous callout, with user handling retries in case of error
- \* Outbound Messaging, which will automatically handle error retries to the service.

**Q65.** A large B2C customer is planning to implement Salesforce CRM to become a Customer centric enterprise.

Below, is their current system landscape diagram.

### Current System Landscape



The goals for implementing Salesforce follows:

1. Develop a 360 view of customer
2. Leverage Salesforce capabilities for Marketing, Sales and Service processes
3. Reuse Enterprise capabilities built for Quoting and Order Management processes Which three systems from the current system landscape can be retired with the implementation of Salesforce?

Choose 3 answers

- \* Order Management System
- \* Case Management System
- \* Sales Activity System
- \* Email Marketing System
- \* Quoting System

**Q66.** Universal Containers' Customer Service Managers wants to be automatically notified when a Customer Service Representative successfully closes a case What is the recommended approach for the Service Manager to be notified in the Salesforce user interface without having to refresh the screen?

- \* Have the user refresh the standard Visualforce page to see closed case updates by setting up the refresh interval on the browser.
- \* Use a standard Visualforce page and embed JavaScript in the standard Visualforce page to refresh the porting of the standard page layout.
- \* Create a custom Visualforce page, subscribe to the 'closed cases' push topic, and display alerts onscreen.
- \* Create a custom Visualforce page with a custom polling mechanism to poll for closed cases and display alerts on the Visualforce page.

**Q67.** Universal Containers (UC) uses Salesforce to track the following customer data:

1. Leads,
2. Contacts

3. Accounts

4. Cases

Salesforce is considered to be the system of record for the customer. In addition to Salesforce, customer data exists in an Enterprise Resource Planning (ERP) system, ticketing system, and enterprise data lake. Each of these additional systems have their own unique identifier. UC plans on using middleware to integrate Salesforce with the external systems.

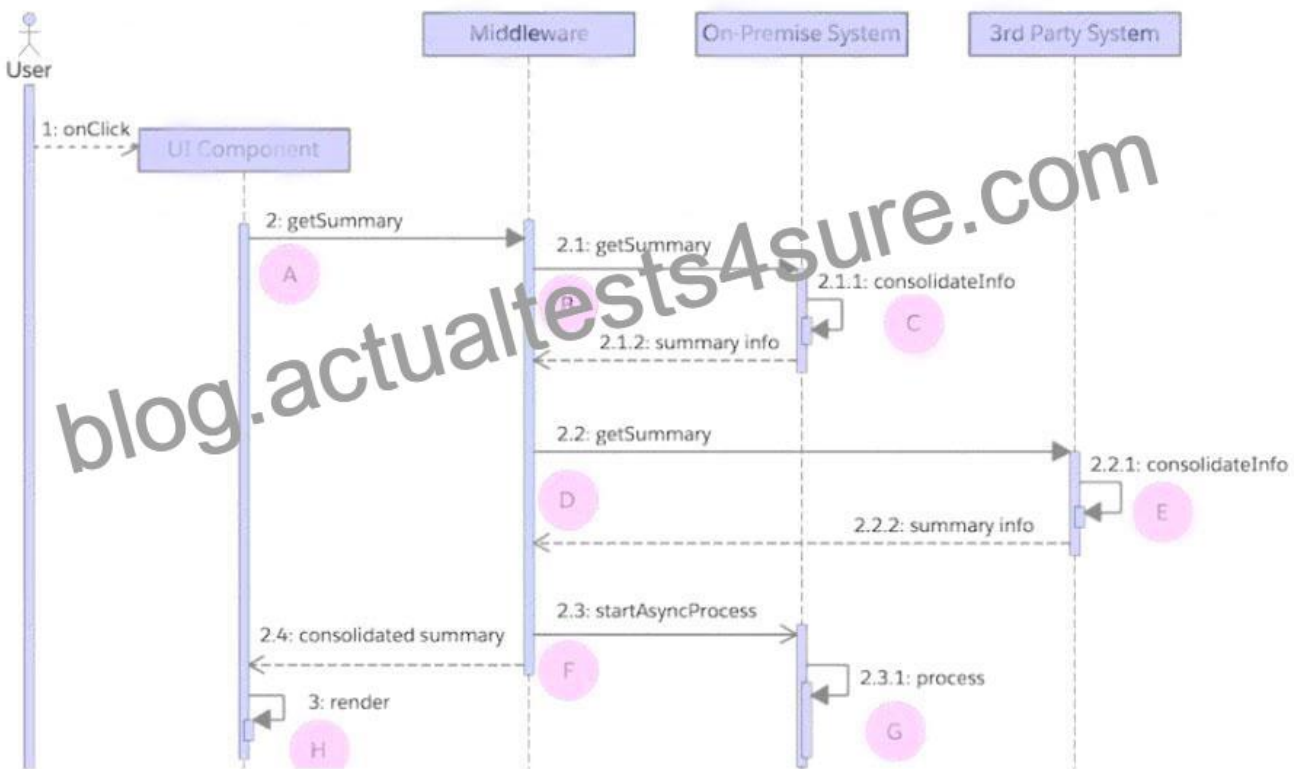
UC has a requirement to update the proper external system with record changes in Salesforce and vice versa.

Which two solutions should an Integration Architect recommend to handle this requirement?

Choose 2 answers

- \* Locally cache external ID's at the middleware layer and design business logic to map updates between systems.
- \* Store unique identifiers in an External ID field in Salesforce and use this to update the proper records across systems.
- \* Use Change Data Capture to update downstream systems accordingly when a record changes.
- \* Design an MDM solution that maps external ID's to the Salesforce record ID.

**Q68.** A company's cloud-based single page application consolidates data local to the application with data from on premise and 3rd party systems. The diagram below typifies the application's combined use of synchronous and asynchronous calls.



The company wants to use the average response time of its application's user interface as a basis for certain alerts. For this purpose, the following occurs:



1. Log every call's start and finish date and time to a central analytics data store.
2. Compute response time uniformly as the difference between the start and finish date and time A to H in the diagram.

Which computation represents the end-to-end response time from the user's perspective?

- \* Sum of A to H
- \* Sum of A to F
- \* Sum of A, G, and H
- \* Sum of A and H

**Q69.** Universal Containers has decided that they will be using the bulk API to migrate the existing data into Salesforce as they will be importing a total of 80 million records.

While planning for the data migration, what techniques should the Architect recommend to make sure the load goes according to schedule?

Choose 2 answers

- \* Pre-process data that the triggers and workflows can be deactivated.
- \* Perform a test load using a full Sandbox prior to the Production load.
- \* Perform loads over a weekend server resource availability.
- \* Leverage several workstations, loading different objects simultaneously.

Salesforce Integration-Architecture-Designer exam covers a wide range of topics related to Salesforce integration, including integration patterns, data migration, API design, security, and governance. Integration-Architecture-Designer exam also covers best practices for integration, such as understanding the requirements of the systems being integrated, selecting the appropriate integration pattern, and designing and implementing a secure and scalable solution.

**Actualtests4sure just published the Salesforce Integration-Architecture-Designer exam dumps!:**

<https://www.actualtests4sure.com/Integration-Architecture-Designer-test-questions.html>